

COMMON RAIL PUMPS

CONTROL OF ACTUATORS

AZ0045-00 – FALSE ACTUATORS KIT FOR CR PUMPS

Similar Delphi YDT410



CONTROL OF THE PUMP DIRECTLY FROM THE ENGINE



AZ0134-278 –DIAGNOSTIC TOOL KIT FOR CR PUMPS

The tester checks the pressure of the common rail pumps directly from the engine.

You can check the pressure of all common rail pumps CP1, CP3, Delphi and Siemens.

AZ0038-00 – WRENCH TOOL KIT TO DISMOUNT AND MOUNT ALL TYPES OF GLOW PLUGS INCLUDING JAPANESE BRANDS

The kit includes nr. 2 connections for dynamometric wrench 1/2" and 3/8



AZ0046-00 – FALSE GLOW PLUGS TOOL KIT TO TEST THE COMPRESSION OF AL BRANDS ENGINES

AZ0139-02 – MOTOMETER

Tool to check the compression of diesel engines



COMMON RAIL PUMPS

PUMPS PULLERS

IMAGE NOT
AVAILABLE

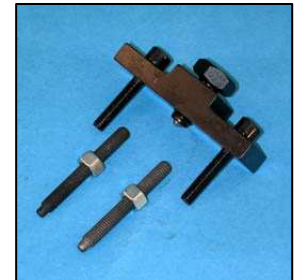
AE0233-01 – PULLER FOR BMW 320 -150CV VP 130 CV

For common rail and VP

AE0233-02 – PULLER FOR BMW 520 TDS – 320D VP M47

Only for common rail CP3

AE0247-05 – PULLEY EXTRACTOR FOR C.R DELPHI



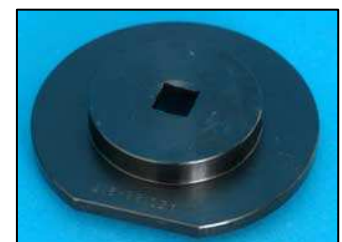
AE0260-00 –RENAULT AND OPEL MOVANO PUMP PULLER

AE0233-CP4 – PULLER FOR CP4 PUMP ON BMW SERIE 1



**AZ0128-218 – TOOL TO MOUNT AND DISMOUNT VP FORD
DURATORQ PUMPS**

**AZ0128-217 – WRENCH TO DISMOUNT RING-NUT OF FORD
MONDEO COMMON RAIL PUMP**



COMMON RAIL PUMPS

PUMP DISASSEMBLY



AZ0134-CR – SWIVEL VICE FOR PUMP CP1

It is composed of:

AZ0134-0A = Swivel vice base

AAE001-00 = Bracket for CR CP1 pump

AAE001-01 - BRACKET FOR PUMP CP3

To be used with AZ0134-CR



AAE000-04C - BRACKET FOR PUMP DELPHI (2 HOLES)

To be used with AZ0134-CR

AAE001-FORD – BRACKET FOR PUMP FORD (DELPHI)

To be used with AZ0134-CR

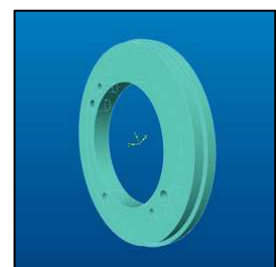


AAE001-MERC – BRACKET FOR PUMP CR MERCEDES CP1

To be used with AZ0134-CR

AAE001-CP4 – BRACKET FOR PUMP CP4

To be used with AZ0134-CR



COMMON RAIL PUMPS



AZ0018-01 - TOOL KIT FOR CP1 PUMP

AZ0018-02 - TOOL KIT FOR CP3 PUMP



AAZ034-00 - INSERTER FOR CP1 CONNECTION

Pressing-in tool for low-pressure connection on CP1

Similar 0.986.612.200

AAZ034-01 - INSERTER FOR CP1 IVECO CONNECTION

Pressing-in tool for low-pressure connection on CP1 IVECO

Similar 0.986.612.201



AAZ034-02 - INSERTER FOR CP1 RENAULT CONNECTION

Pressing-in tool for low-pressure connection on CP1 RENAULT

Similar 0.986.612.205

AAZ034-03 - INSERTER FOR BRACKET AND OIL-SEAL FOR CP1 AND CP3

Insert kit for oil-seal and bracket on common rail pumps CP1 and CP3

Similar 0.986.612.422



COMMON RAIL PUMPS



AAZ034-04 - SCREWS FOR HEAD COVERS CP1

Couple of screws to center the head cover on CP1 pump

Similar 0.986.602.501

AAZ034-05 - DEVICE TO MOUNT O-RING

To mount the o-ring on the pressure control valve with filter on Common Rail pumps

Similar 0.986.612.787



AAZ034-911 – INSERTER FOR VALVE CAGE ON CP1H PUMP

Similar 0.986.612.911

AC0520-00 – WRENCH TO DISMOUNT CONNECTION DENSO PUMP HP0 12 SIDES MM 50



AC0528-CR – WRENCH 28MM X SENSOR PUMP CP1 SIEMENS

AC0516-CR36 – OPEN WRENCH 36MM WITH CONNECTION FOR DYNAMOMETRIC WRENCH FOR PRESSURE SENSOR OF SIEMENS PUMPS

With connection for dynamometric wrench 14x18

To be used with dynamometric wrench AC0516-CR



AC0516-CR – DYNAMOMETRIC WRENCH WITH ENGAGE CONNECTION

Measure engage connection: 14x18mm

Nm: from 20 to 100 Nm

COMMON RAIL PUMPS



AC0530-CP4 – WRENCH FOR VALVE OF CP4 PUMP

AC0482-00 – WRENCH FOR IN-LET CONNECTION CP3

Similar 0.986.612.991



AC0468-00 – TORX WRENCH FOR COMMON RAIL CP3

AE0268-CR – KIT OF PULLERS TO EXTRACT DIESEL IN-LET BRASS PIPE ON CP1 AND CP1H

Diam. Brass pipe: 8 and 10 mm



AZ0128-26 – KIT TO MOUNT AND DISMOUNT SEEGER ON CR DELPHI PUMPS

AZ0128-22 - TAPPET LIFTER FOR CP3

Kit of 3 tappet lifters

Similar 0.986.612.427



AZ0128-22-D - TAPPET LIFTER FOR CP3 - DURAMAX

Kit of 3 tappet lifters

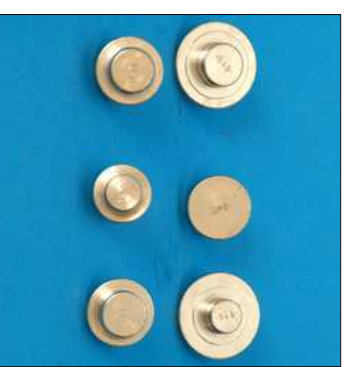
For pumps 110 Duramax

COMMON RAIL PUMPS



AZ0128-25 – KIT OF INSERTERS FOR CP3

AZ0128-24 – ADJUSTING KIT FOR CP3 - 6 PIECES



AE0300-CP4 – PULLER FOR CP4 PUMP



COMMON RAIL PUMPS

PUMPS ON TEST BENCH

AS0003-00 - BOSCH BRACKET ISO

Similar 1.688.010.124

IMAGE NOT
AVAILABLE

IMAGE NOT
AVAILABLE

AAE157-08 – FLANGE DIAM 50 FOR PUMP CP1

VE flange that allows to mount on test bench CP1 pumps

Similar 1.685.720.062

AAE001-02 – FLANGE FOR CP3 PUMP

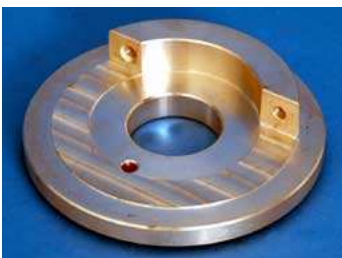


AAE001-03 – FLANGE WITH RING X CP3 MERCEDES PUMP

AAE000-04 – FLANGE FOR DELPHI-FORD PUMP

VE flange for Renault Megane that allows to mount on test bench common rail Delphi – Ford pump

IMAGE NOT
AVAILABLE



AAE000-04A – FLANGE FOR DELPHI PUMPS (2 HOLES)

COMMON RAIL PUMPS

AAE000-04B – FLANGE FOR C.R. DELPHI LOOP HOLES

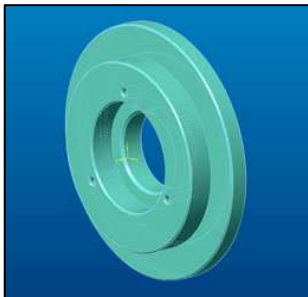
IMAGE NOT
AVAILABLE



AZ0128-20 – COMMON RAIL KIT FOR MERCEDES

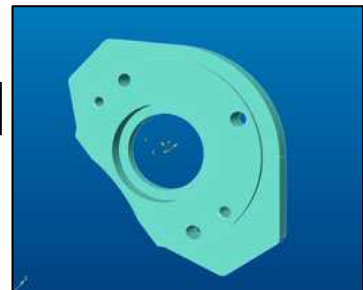
To be used with flange AAE157-08

**AAE000-NIP – FLANGE FOR CR DENSO PUMP HP2/3 ON FORD
AND FIAT**



AAE001-CP1H3 – FLANGE FOR CP1 H3

AAE157-CP4 – BRACKET FOR CP4



**AAE002-CR – BRACKET FOR CR PUMPS MOUNTED ON
NISSAN QASHQAI**

COMMON RAIL PUMPS



AAZ034-08 – ADAPTOR FOR PRESSURE SENSOR CP3

Adaptor for pressure sensor on pump CR –CP3

AAZ034-15 – ADAPTOR FOR PRESSURE SENSOR CP1H/CP3

Adaptor for pressure sensor pump CR CP1H-CP3



AAZ034-07 – ADAPTOR FOR PRESSURE SENSOR DELPHI

Adaptor for pressure sensor pump CR DELPHI

AAZ034-16 – ADAPTOR FOR PRESSURE SENSOR SIEMENS

Adaptor for pressure sensor pumps CR SIEMENS



AAZ034-17 – ADAPTOR FOR PRESSURE SENSOR DENSO

Adaptor for pressure sensor pumps CR DENSO

AAZ034-20 – ADAPTOR FOR PRESSURE SENSOR SIEMENS-BOSCH

Adaptor for pressure sensor pumps CR BOSCH - SIEMENS



COMMON RAIL PUMPS

AAZ034-18 – REDUCTION FOR HIGH PRESSURE SIEMENS

Reduction for high-pressure pipes for Siemens pumps



AAZ034-19 – ADAPTOR FOR PRESSURE GOVERNOR ON SIEMENS PUMP

Adaptor for pressure governor on pumps Bosch Siemens

AAZ034-13 – DUMMY REGULATOR FOR CR CP1 PUMPS

Similar: 0.986.612.413



AAZ034-21 – PRESSURE REDUCTION SIEMENS WITH METERING VALVE

AAZ034-22 – ADAPTOR FOR DUMMY REGULATOR DENSO HP3 – CP3



AAZ034-CP4 – ADAPTOR FOR HIGH PRESSURE CONNECTION ON CP4 PUMPS

COMMON RAIL PUMPS

AZ0134-SIM – COMMON RAIL SIMULATOR



AZ0134-SIM – COMMON RAIL SIMULATOR

Simulator to check common rail pumps and injectors BOSCH, DELPHI, SIEMENS e DENSO.

Our simulator can be mounted on all test benches

It is possible to check all kind of common rail pumps and maximum nr 6 injectors at the same time.

It tests all kind of common rail injectors, ELECTROMAGNETIC and PIEZOELECTRIC.

COMMON RAIL PUMPS

BB0001-00 – COMMON RAIL BUSH –CP1-

External diameter: 19mm
Internal diameter: 17mm
Length: 15mm



BB0002-00 –COMMON RAIL BUSH –CP1-

External diameter: 22mm
Internal diameter: 20mm
Length: 20mm



BB0003-00 –COMMON RAIL BUSH –CP1-

External diameter: 26mm
Internal diameter: 24mm
Length: 20mm



BB0004-00 –COMMON RAIL BUSH –CP3-

External diameter: 19mm
Internal diameter: 17mm
Length 17mm



BB0005-00 –COMMON RAIL BUSH –CP3-

External diameter: 22mm
Internal diameter: 20mm
Length: 22mm



BB0006-00 –COMMON RAIL BUSH –CP3-

External diameter: 28mm
Internal diameter: 25mm
Length: 25mm



BB0007-00 –COMMON RAIL BUSH –CP3-

External diameter: 33mm
Internal diameter: 30mm
Length: 25mm

HIGH PRESSURE FLEXIBLE PIPES



| Code ----- | Bosch code | Dimension | Nut | Description |
|------------|---------------|-------------|-------|------------------------|
| AAT005-00 | | 6X2X300MM | 14X14 | High pressure Flexible |
| AAT006-00 | | 6X2X300MM | 14X12 | High pressure Flexible |
| AAT007-00 | | 6X2X300MM | 12X12 | High pressure Flexible |
| AAT000-FX | 1.680.750.000 | 6X2X400MM | 14X14 | High pressure Flexible |
| AAT001-FX | 1.680.750.001 | 6X2X400MM | 12X14 | High pressure Flexible |
| AAT008-FX | 1.680.750.008 | 6X2X600MM | 14X14 | High pressure Flexible |
| AAT010-FX | 1.688.750.010 | 6X2X600MM | 12X12 | High pressure Flexible |
| AAT011-FX | | 6X2X400MM | 12X12 | High pressure Flexible |
| AAT014-FX | 1.688.750.014 | 6X2X600MM | 12X14 | High pressure Flexible |
| AAT017-FX | 1.680.750.017 | 6X2X840MM | 12X14 | High pressure Flexible |
| AAT020-FX | 1.688.750.020 | 6X2X500MM | 12X14 | High pressure Flexible |
| AAT021-FX | 1.688.750.021 | 6X2X500MM | 14X14 | High pressure Flexible |
| AAT073-FX | 1.680.750.073 | 6X2X450MM | 12X14 | High pressure Flexible |
| AAT085-FX | 1.680.750.085 | 6X2.2X350MM | 12X14 | High pressure Flexible |

HIGH-PRESSURE FLEXIBLE PIPES FOR VP

| Code ----- | Bosch code | Old Bosch code | Dimension | Nut | Description |
|------------|---------------|----------------|-------------|-------|------------------------|
| AAT100-FX | 1.680.750.100 | 1.680.750.091 | 6X2.2X350MM | 12X14 | High pressure Flexible |
| AAT101-FX | 1.680.750.101 | 1.680.750.092 | 6X2.2X450MM | 14X14 | High pressure Flexible |
| AAT102-FX | 1.680.750.102 | 1.680.750.093 | 6X2X845MM | 14X14 | High pressure Flexible |
| AAT103-FX | 1.680.750.103 | 1.680.750.096 | 6X2X450MM | 12X14 | High pressure Flexible |

Attention: all high-pressure flexible pipes for VP , AAT100-FX, AAT101-FX, ATT102-FX and AAT103-FX are sold in kif of 6 pipes

FLEXIBLE PIPES X EPS 815

| Code ----- | Bosch code | Dimension | Nut | Description |
|------------|---------------|------------|-------|---------------------------------------|
| AAT227-FX | 1.680.712.227 | 6X2X1000MM | 14X12 | with bended-connect. high press flex. |
| AAT229-FX | 1.680.712.229 | 6X2X1000MM | 14X12 | high pressure flexible |
| AAT815-00 | | 6X2X1000MM | 14X14 | high pressure BLUE flexible |

RIGID PIPES FOR TEST BENCH

| Code | Bosch Codes | Measures | Nut in mm | Test pressure line for..... |
|------------------|--|---------------|------------|---|
| Codice | Codici | Misure | Dado in mm | Tubi banchi prova per.... |
| AAT001-CR | | 6X2.4X155 | 14X14 | Common rail nozzleholders |
| AAT002-CR | | 6X2.4X155 | 12X14 | Common rail nozzleholders |
| AAT003-CR | | 6X2.4X155 | 12X12 | Common rail nozzleholders |
| AAT008-00 | 1.680.750.008 | 6 X 2 X 600 | 14 X 14 | A, MW pumps |
| AAT014-00 | 1.680.750.014 | 6 X 2 X 600 | 12 X 14 | K, A, M, MW pumps |
| AAT015-00 | 1.680.750.015 | 6 X 3 X 600 | 14 X 14 | A, B, P (fino a pompante .), S7000 su Scania (con portainiettore 019) A, B, P (up to 11mm. of pumping group), S7000 on Scania (with nozzle holder 019) |
| AAT017-00 | 1.680.750.017 | 6 X 2 X 840 | 12 X 14 | VA, VM, VE, F, NP, VE pumps |
| AAT021-00 | 1.680.750.021 | 6 X 2 X 500 | 14 X 14 | CAV, SIMMS, GR.B pumps |
| AAT028-00 | 1.680.750.028 | 6 X 2 X 840 | 14 X 14 | VA, VE pumps |
| AAT060-00 | 1.680.750.060 | 8 X 2 X 1000 | 14 X 18 | 12mm. P pumps |
| AAT069-00 | 1.680.750.069 | 8 X 4 X 1500 | 18 X 18 | PEV, ZWM pumps |
| AAT073-00 | 1.680.750.073 | 6 X 2 X 450 | 12 X 14 | VE, BMW pumps |
| AAT074-00 | 1.680.750.074 | 8 X 3 X 1000 | 14 X 16 | Pomp P 12mm. con piastrina foro calibrato . P pumps with orifice plate with calibrated hole |
| AAT075-00 | 1.680.750.075 sostituisce replace 1.680.750.067 | 8 x 3 x 1000 | 14 x 14 | P, S7100, S7800 pumps |
| AAT085-00 | 1.680.750.085 | 6 X 1.6 X 350 | 12 X 14 | Pompa VE con iniettore diretto e rapido VE pumps with high-speed direct injection engine |
| AAT089-00 | 1.680.750.089 | 8 X 3 X 600 | 14 X 14 | A, P, MW pumps |
| AAT114-00 | AHP114 | 6 X 2.5 X 330 | 12 X 12 | Epic PSA pumps |
| AAT126-00 | AHP126 | 6 X 1.6 X 365 | 12 X 12 | Epic Ford pumps |
| AAT133-00 | AHP133 | 6 X 1.8 X 450 | 12 X 14 | DP200 pumps |
| AAT134-00 | AHP134 | 6 X 1.5 X 710 | 12 X 14 | DP200 pumps |



AAT004-00 – SHAPED PIPES FOR HAND TEST INJECTOR

Nut 14x14mm

AAT099-00 – ROOSA MASTER PIPE

Shaped pipe for Roosa Master nozzleholders

IMAGE NOT
AVAILABLE